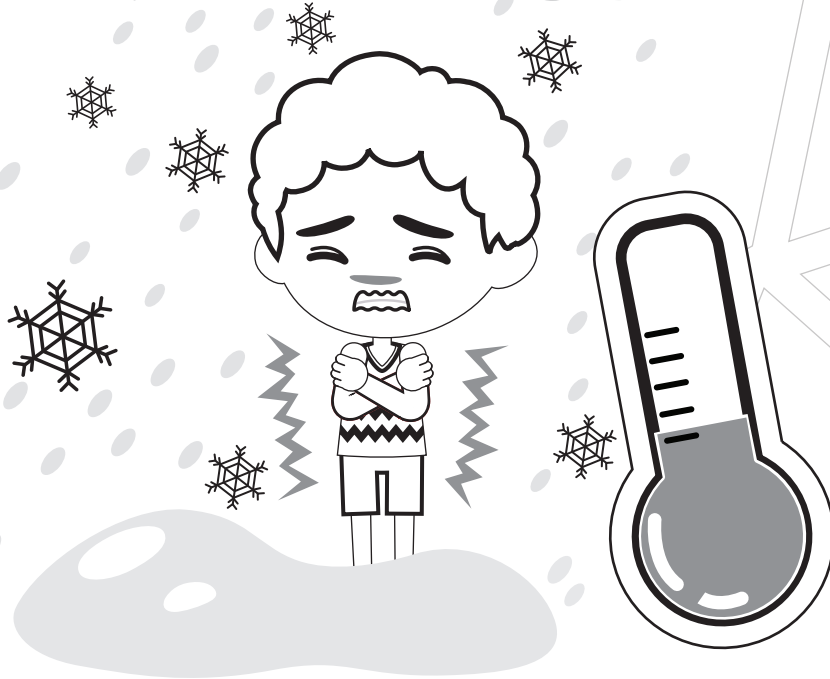




Let's Talk About the Weather

Extreme Cold



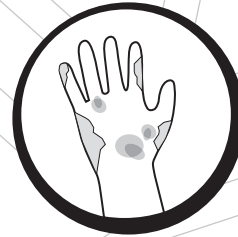
How would I feel?



Confusion



Shivering



Cold to the Touch

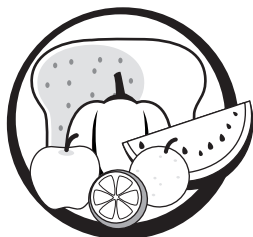


Slurred Speech

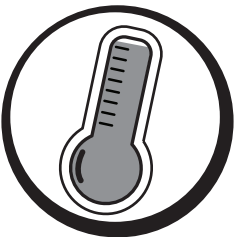
What should I do?



Drink Fluids!



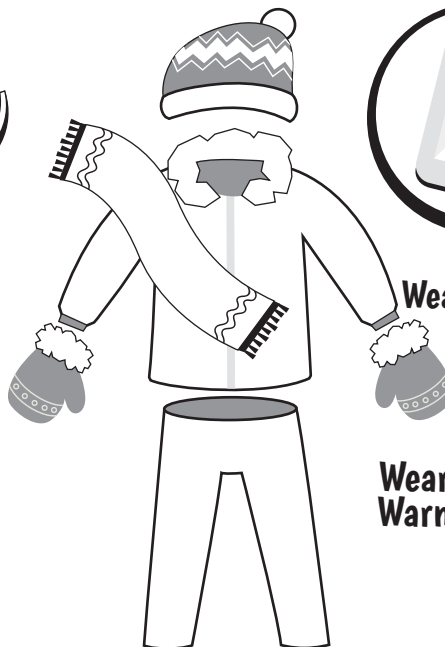
Eat Food



Seek Heat



Seek Shelter

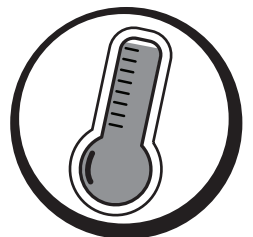


Check the
Weather Forecast



Keep Feet Dry
and Wear Boots

Wear Layers of
Warm Clothing



Know Warm
Places to Stay